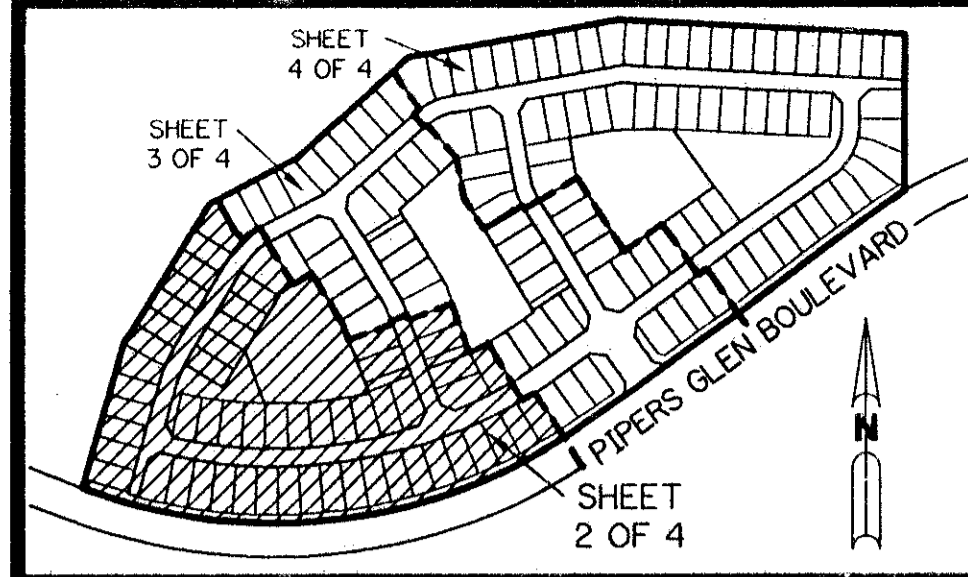


PIPERS GLEN - PARCEL "E" REPLAT 135

BEING A PARCEL OF LAND LYING IN SECTIONS 3 AND 4, TOWNSHIP 46 SOUTH, RANGE 42 EAST, AND A REPLAT OF LOTS 6, 7, 13, 14, 24, 25, 33, 34 AND 48 THROUGH 51 OF THE PLAT OF PIPERS GLEN - PARCEL "E" AS RECORDED IN PLAT BOOK 75, PAGES 55 THROUGH 58, INCLUSIVE, OF THE PUBLIC RECORDS OF PALM BEACH COUNTY, FLORIDA.

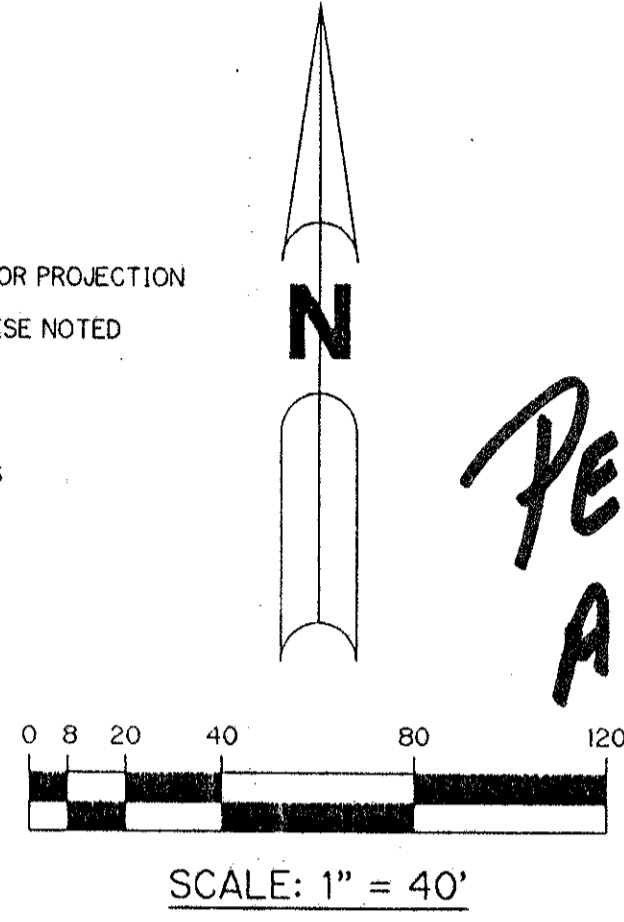
SHEET 2 OF 4 NOVEMBER, 1995



KEY MAP N.T.S.

NOTE:

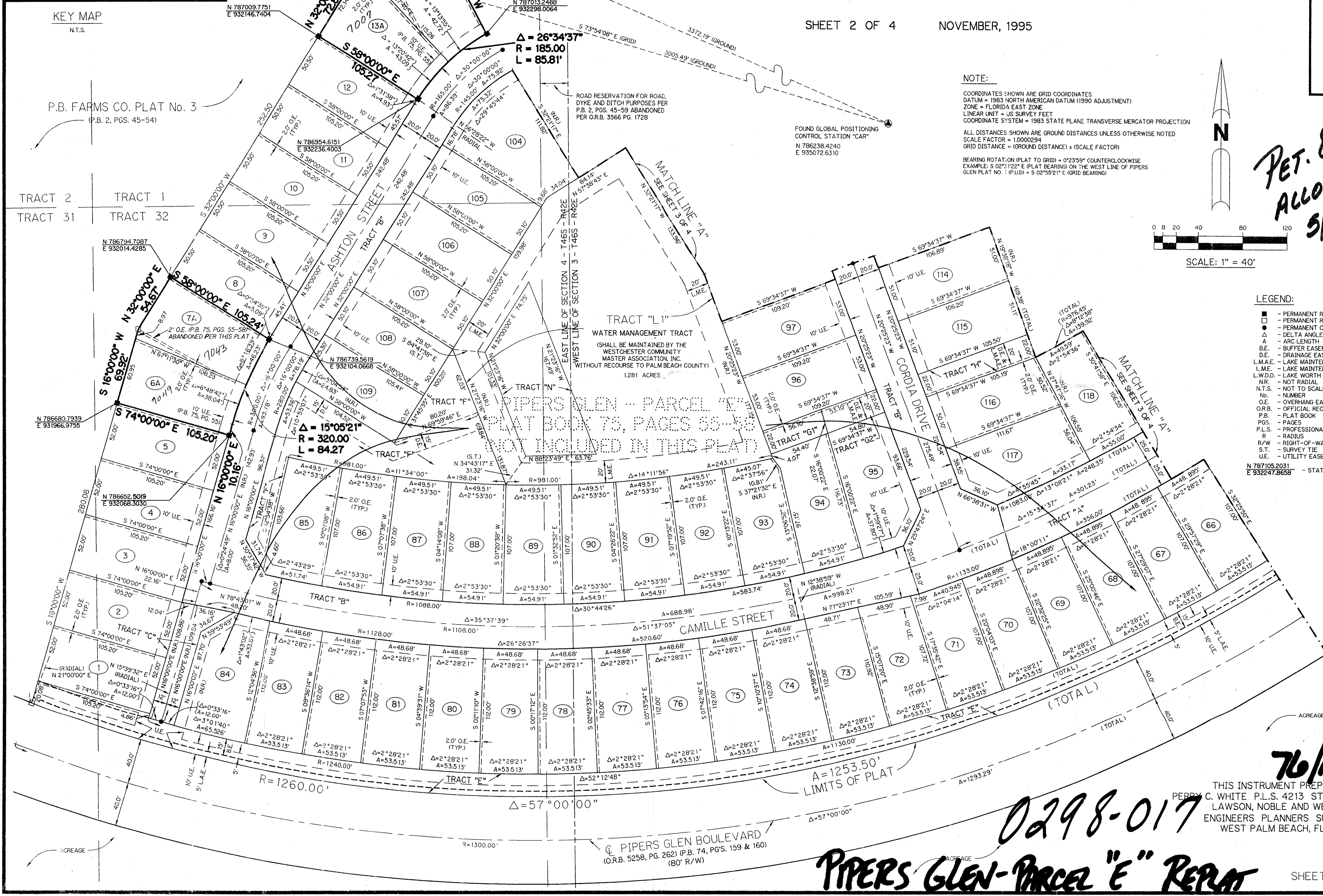
COORDINATES SHOWN ARE GRID COORDINATES
DATUM = 1983 NORTH AMERICAN DATUM (1990 ADJUSTMENT)
ZONE = FLORIDA EAST ZONE
LINEAR UNIT = US SURVEY FEET
COORDINATE SYSTEM = 1983 STATE PLANE TRANSVERSE MERCATOR PROJECTION
ALL DISTANCES SHOWN ARE GROUND DISTANCES UNLESS OTHERWISE NOTED
SCALE FACTOR = 1.0000294
GRID DISTANCE = (GROUND DISTANCE) x (SCALE FACTOR)
BEARING ROTATION (PLAT TO GRID) = 0°23'59" COUNTERCLOCKWISE
EXAMPLE: S 02°12'22" E (PLAT BEARING) ON THE WEST LINE OF PIPERS GLEN PLAT NO. 1 (PUD) = S 02°59'21" E (GRID BEARING)



*PET. 80-212E
ALLOC. #0003
5/3/3/K*

LEGEND:

- - PERMANENT REFERENCE MONUMENT SET, PLS #4213
- - PERMANENT REFERENCE MONUMENT FOUND, PLS #4213
- - PERMANENT CONTROL POINT, PLS #4213
- Δ - DELTA ANGLE
- A - ARC LENGTH
- B.E. - BUFFER EASEMENT
- D.E. - DRAINAGE EASEMENT
- L.M.A.E. - LAKE MAINTENANCE ACCESS EASEMENT
- L.M.E. - LAKE MAINTENANCE EASEMENT
- L.W.D.D. - LAKE WORTH DRAINAGE DISTRICT
- NR. - NOT RADIAL
- N.T.S. - NOT TO SCALE
- No. - NUMBER
- O.E. - OVERHANG EASEMENT
- O.R.B. - OFFICIAL RECORD BOOK
- P.B. - PLAT BOOK
- P.G.S. - PAGES
- P.L.S. - PROFESSIONAL LAND SURVEYOR
- R - RADIUS
- R/W - RIGHT-OF-WAY
- S.T. - SURVEY TIE
- UE - UTILITY EASEMENT
- N 787105.2031
E 932247.8658 - STATE PLANE COORDINATES



SUBDIVISION - PIPERS GLEN
BOOK 75 PAGE 135
FLOOD MAP # 304
ZONING RT
QUAD # 31-57
SE 80-212 ZIP CODE 33437
PUD NAME SAME

TAZ-457

76/135

0298-017

PIPERS GLEN - PARCEL "E" REPLAT

PIPERS GLEN BOULEVARD
(O.R.B. 5258, PG. 262) (P.B. 74, P.G.S. 159 & 160)
(80' R/W)